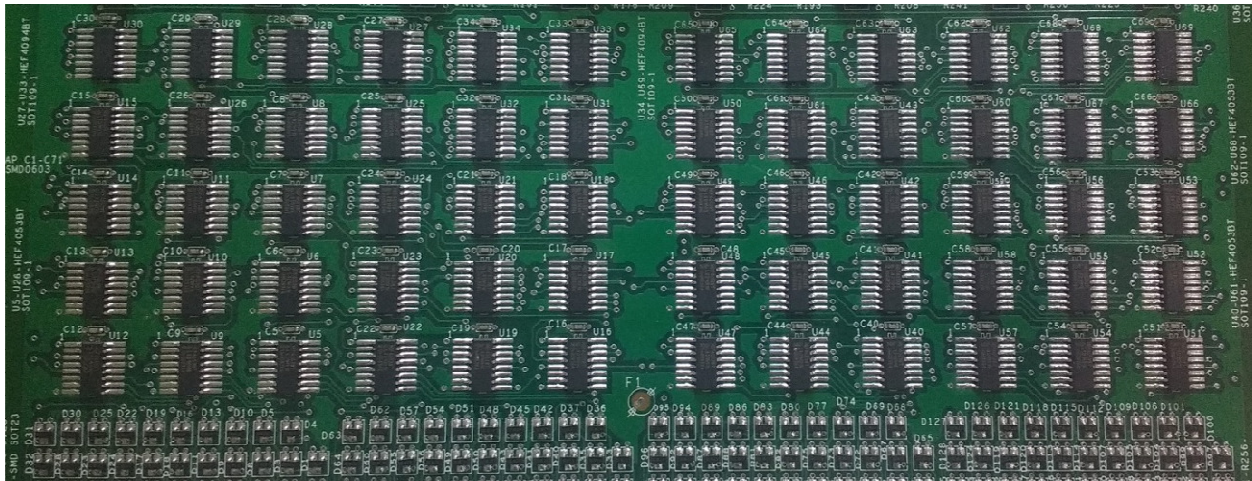


# FUTURA APSOL PVT. LTD.

1212/B/2, Apte Road, Shivajinagar, Pune – 411004

Tel: 020-2553 1832,9527036677, [ems@faturas.com](mailto:ems@faturas.com). [www.faturas.com](http://www.faturas.com)

## SMD EMS using Pick & Place for even one PCB



**Assembled at Futura Apsol Pvt Ltd.**

Futura Apsol Pvt. Ltd (FAPL), Pune offers SMD services (EMS) using pick and place machine for small batch quantities, starting from even one PCB.

FAPL is an ISO9001-2015 certified company engaged in design, manufacturing electronic equipments since 1988.

### **FAPL has set up an EMS section with following processes and equipments**

1. Printing: Manual, maximum PCB size: 300x300mm.
2. Pick & place: Automatic, maximum PCB size 350x400mm, smallest component 0201, smallest component pitch 50mil.
3. Reflow solder: Flat bed, temperature controlled.
4. BGA rework: PCB size: 300x300mm.
5. Visual inspection: Electronic magnifier, manual.

### **FAPL offers**

1. SMD assembly using Pick and Place.
2. SMD assembly using Pick and Place, through hole component assembly, using hand soldering.
3. PCB assembly and "function" checking.

### **Advantages**

1. Complete PCB solution under one roof.
2. ROHS compliant, "No clean" assembly.
3. Technically experienced team.
4. Small batch quantities.
5. Rework station.
6. PCB of "Tube light" can be soldered.